

TUM Graduate School

International mobility programs and funding options for
TUM doctoral candidates

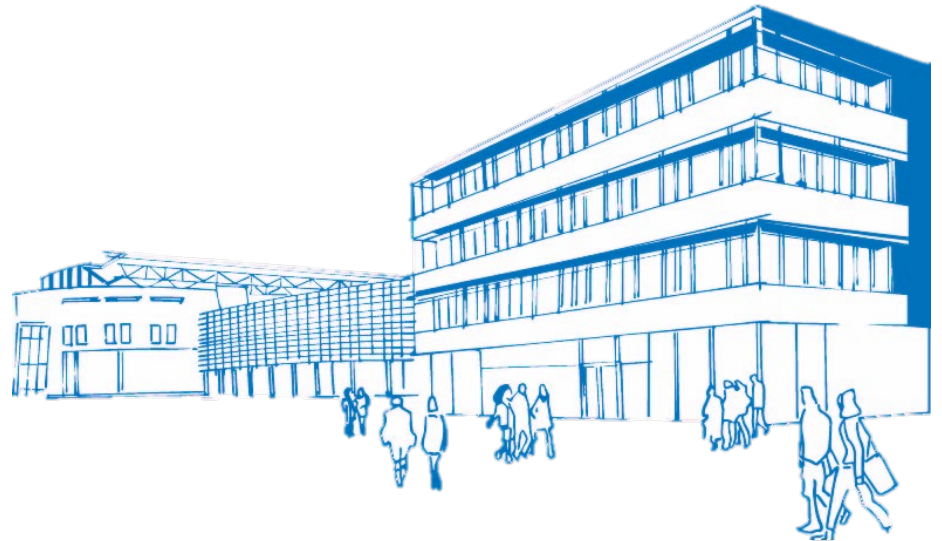
Zizheng Zhang

Technical University of Munich

TUM Graduate School

Zoom, April 11, 2022

zhang@zv.tum.de
www.gs.tum.de



TUM-GS individual mobility funding

The TUM Graduate School offers financial support to its members **to cover part of the expenses of their international activities during their doctorate**. The financial support will be granted within the legal framework of the Bavarian Travel Expense Act.



TUM-GS Internationalization Support

Standard TUM-GS mobility funding scheme for doctoral candidates with TUM employment contract, as well as scholarship holders without mobility funding from scholarship provider

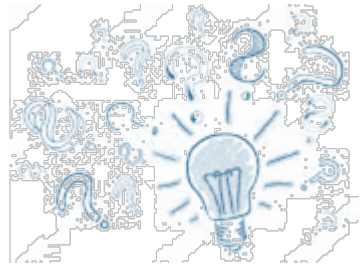
- Available after the feedback talk in the second half of the doctoral project
- **Reimbursement of actual travel expenses based on the Bavarian Travel Expense Act**
- 1.600 EUR mobility budget per eligible doctoral candidate for the entire duration of the doctoral project
 - can be applied for multiple times up to overall funding limit
 - can be combined with funding from the TUM chair/research group
- Additional **1.400 EUR mobility budget for research stays > 4 weeks**

Internationalization support: activities

- Research stays at scientific, academic, research institutions or at companies (R&D)
- Presentation of the candidate's own research findings at international conferences, symposia
- Participation in international subject-specific summer/winter schools, workshops
- Invitation of international visiting researchers for joint research on the candidate's own research project at TUM
- Invitation of international examiners for the candidate's oral examination at TUM



Internationalization support: application steps I



Discuss **funding options** with doctoral supervisor



Apply for TUM-GS international mobility funding: generate **TUM-GS internationalization support application** form through platform **DocGS**



Contact **Graduate Center** to inquire about eligibility for TUM-GS international funding



Apply for disbursement order (*Fortbildungs-/Dienstreiseantrag*) from the **TUM travel expense office** (*Zentrale Reisekostenstelle - only for TUM staff*)

Have a successful international activity abroad

Internationalization support: application steps II



Submit **disreimbursement form**
(*Auszahlungsanordnung- only for TUM staff*),
**original receipts and approved TUM-GS
internationalization support application form**
via post to the TUM-GS management office



Apply for reimbursement
from the **TUM travel expense office**
(Antrag auf Kostenerstattung, Zentrale
Reisekostenstelle- *only for TUM staff*)



If needed: clarification with
applicant, research group/chair
and/or Graduate Center in case
of questions



Reimbursement of travel
expenses by the TUM-GS
management office

Internationalization Grant

Special funding scheme for TUM doctoral candidates with non-TUM employment (e.g. industry, non-university research institutions) or self-funded candidates

- **Competitive selection process** based on scientific excellence and excellence of the activity applied
- Application at Graduate Center, open 4x per year
- **Reimbursement of actual travel expenses** based on the Bavarian Travel Expense Act
- **1.600€ mobility budget** per eligible doctoral candidate for the entire duration of the doctoral project
 - can be applied for multiple times up to overall funding limit
 - cannot be combined with other mobility funding options (e.g. from industry)

Family Mobility Allowance

The TUM-GS Family Mobility Allowance is designed to financially support **additional expenses caused by accompanying partner and/or underage child**, but can also be applied for other persons, e.g. parents, if the doctoral candidate **requires extra care due to special health/mobility issues**.

- For **international research stays of at least 3 months**
- Maximum funding period of **6 months**

- Allowance of **400 EUR/month** (for accompanying partner/parent and/or underage child)
- Additional 200 EUR/month for each additional underage child

Diversity Supplement Travel Grant

The TUM-GS Diversity Supplement Travel Grant supports short term research stays abroad by doctoral candidates with **family obligations and/or special health/other needs**.

Supplement to travel expenses incurred for **family members** (e.g. underage child) of doctoral candidates who **absolutely must travel with the candidate** due to special circumstances.

Doctoral candidates who face **significant additional costs when traveling due to physical disabilities or special needs** can also apply for this supplement.

The doctoral candidate can apply for up to **500 EUR** per trip for the travel expenses actually incurred.

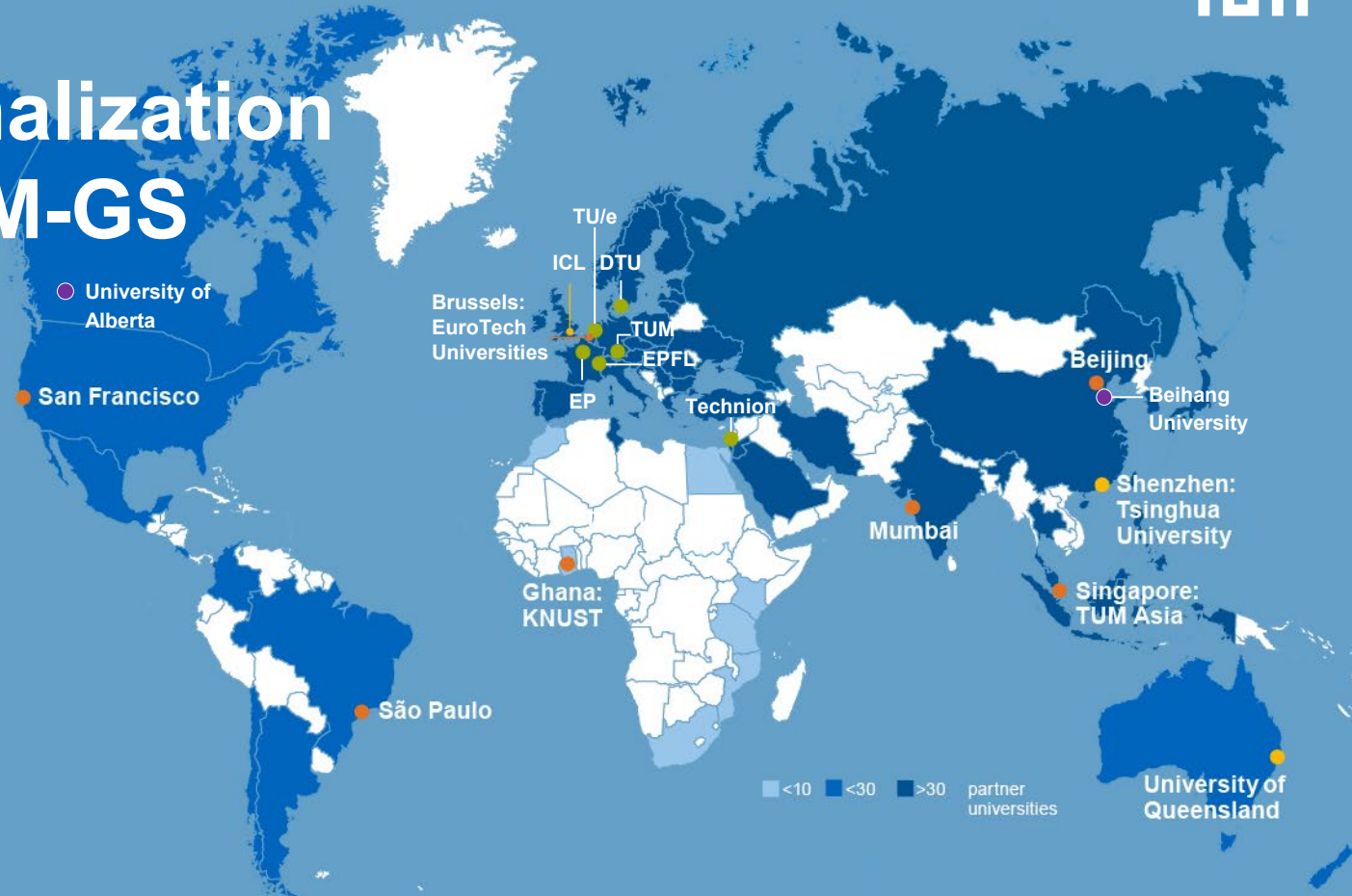
TUM-GS program funding

To foster **international and intercultural collaboration and networking** with researchers from **strategic TUM partner universities**, the TUM Graduate School offers various international programs and initiatives with international partner universities around the globe.



Internationalization TUM & TUM-GS

- EuroTech Alliance
- International locations and strategic initiatives
- Flagship partners
- TUM-GS International Exchange Partners



■ <10
 ■ <30
 ■ >30
 partner universities

TUM- Beihang University Research Exchange

- Research exchange at Beihang University at hosting research group for **stays of 3-6 months**
- Open to doctoral candidates from all disciplines
- **5** placements per year
- **Two application deadlines** per year:
 - 15 May for the fall semester (Sep-Jan)
 - 15 October for the spring semester (March-July)
- **Exchange@Beihang Grant** of max. 1.000€ travel support, research allowance of 1.200€ in total for exchange period at Beihang



TUM- University of Queensland Joint Doctoral Supervision

- Supervisor at TUM and co-supervisor at UQ for the entire doctoral research project
- 12 months research stay with co-supervisor
- Research@UQ Grant of 1.000€ travel support, 400€/month research allowance, 2.000€ one-time overhead budget for TUM research group
- Joint doctoral examination
- TUM doctoral degree awarded with special TUM doctoral diploma for co-supervised doctoral project



EuroTech Universities Alliance

Doctoral Summer/Winter Schools

- Self-organized Summer/Winter School by doctoral candidates for their peers
- Organization committee from at least 3 EuroTech partner universities
- 2-7 days on the premises of an alliance partner
- Interdisciplinary topic at the cutting edge of science and society
- One application call per year – **current call open until June 30th, 2022.**
- Financial support for TUM hosted summer/winter school with up to 10.000€

Joint Supervision Program

- Supervisor at TUM and co-supervisor at partner university for the entire doctoral research project
- 6 months research stay with co-supervisor
- **Research@EuroTech Grant** of 500€ travel support, 400€/month research allowance, 2.000€ one-time overhead budget for TUM research group
- Joint doctoral examination & **TUM doctoral degree awarded with special TUM doctoral diploma for co-supervised doctoral project**

TUM- Imperial College London Global Fellows Program

- Annual 5 days Summer School in June/July
- Focus on professional skills training & collaboration activities under an interdisciplinary academic theme
- In 2022: trilateral Summer School with 3rd partner NTU Singapore
- TUM doctoral candidates from all disciplines
- Call of application January/February each year
- Fully funded (travel to location, accommodation on site, participation fee)
- Research placement @ partner for 3-4 weeks possible after the summer school with additional funding



Learn more and stay in touch!

Please do not hesitate to contact us via international@gs.tum.de



Visit our website
www.gs.tum.de



Subscribe to our
newsletters



Follow
[@tum.graduateschool](https://www.instagram.com/tum.graduateschool)
on Instagram



Follow TUM
Graduate School
on LinkedIn